

General Lip Installation Guide

People suggested for installation: 2

Tools: Phillips Screwdriver
Flat Head Screwdriver
Sockets
Ratchet
Extensions
Dremel with bits
Hard file
Drill
Drill bits
Self Tapping Screws
Double-sided tape
Measuring tape
Masking tape

DISCLAIMER: Professional Installation is highly recommended but not required.

Install at your own risk.

Every lip and car is different. Installation processes will vary depending on the style and vehicle. This guide is only a reference to the installation process.


You will need to remove the bumper from the vehicle. If you can not remove the bumper.  here and take your vehicle to a professional.



Fig. 1
Remove the bumper and place lip onto the bumper. Do not force the lip onto the bumper. Pay attention to the fitment to figure out what modification will be needed for installation.

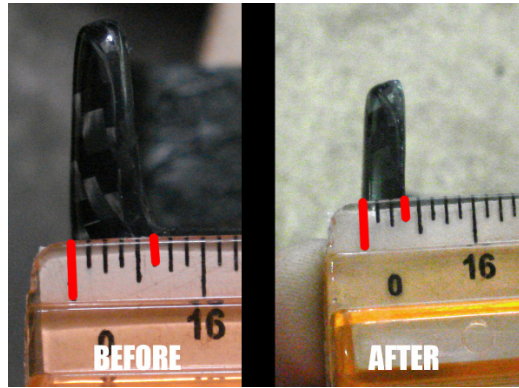


Fig. 2
If the lip doesn't fit perfectly snug, small amounts of the lip will require shaving and/or shaping. Use either a dremel or a hand file.

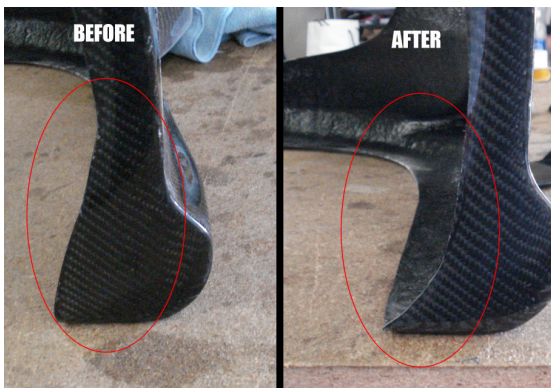


Fig. 3
Shaving and/or shaping might be required for proper fitment in various areas. Not all lips will require this step.

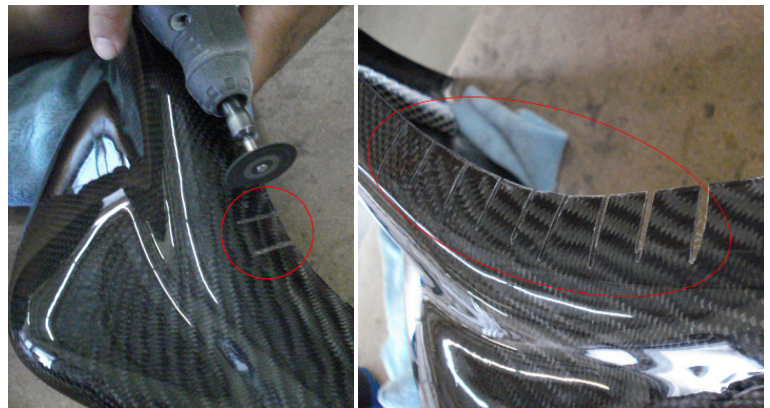


Fig. 4
Stress cuts can be used to relieve/prevent cracking during and/or after installation. Pictures above are an example of how the cuts can be made with dremel cutting wheel.



Fig. 5
After adjustments are made, properly align the lip onto the bumper. Measure both ends, make sure they are of equal heights and that the lip is snug. Keep lip in place with masking tape.

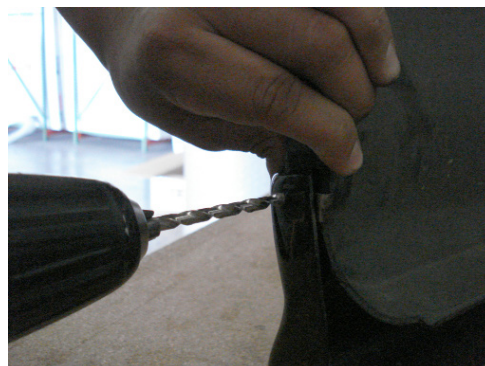


Fig. 6
Align drilling points with existing mounting points on the bumper. Drill through carbon only. Use your best judgment to secure the lip for the best fitment possible.

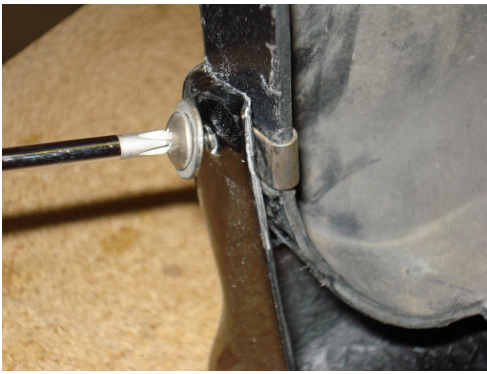


Fig. 7
Install the screws but don't completely tighten them yet. Leave room for adjustments if needed.

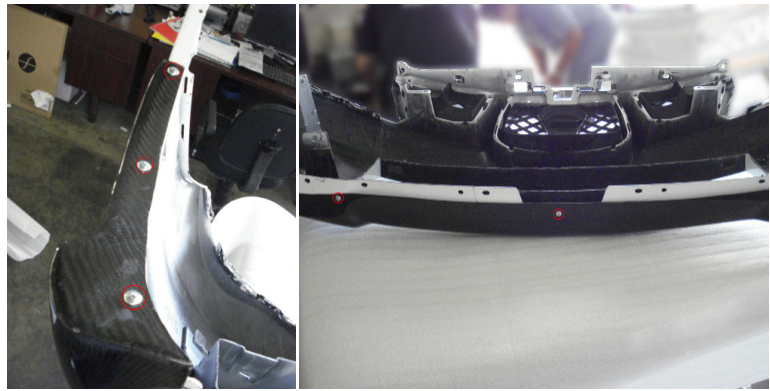


Fig. 8
Use previous steps in fig. 6 and 7 to complete installation. Once all screws are in place, finish your installation by tightening all the screws.



Fig. 9
Do a visual inspection and make any final adjustment as necessary.



Fig. 10
Now that all final adjustments have been made to secure the lip, the bumper can be reinstalled on the car.